



THE SITUATION OF THE SOCIALY EXCLUDED GROUPS IN THE PHILIPPINES

Voice Baseline Report

www.voice.global/philippines

POVERTY



Limiting children's
access to education
and forces them to be engaged in
child labor



CORPORAL PUNISHMENT

Both in household & school settings



UNDER REPRESENTED

Lack of representation or participation in political activities

Key Issues and Challenges of CHILDREN & YOUTH in the Philippines

TEEN PREGNANCY & LACK OF ACCESS TO RH SERVICES

Primarily because of required parental consent

LACK OF VOICE IN DECISION MAKING

Both in household & community settings



limited
^ **LIVELIHOOD OPPORTUNITIES**

limited
^ **ACCESS TO HEALTH SERVICES**

Due to stereotypes on age and productivity

Due to expensive medical procedures and medicines.



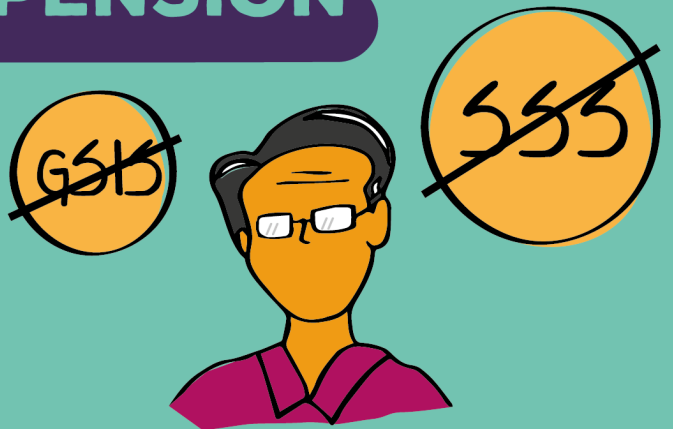
Key Issues and Challenges of **OLDER PERSONS** in the Philippines

ABUSE & VIOLENCE AT HOME

limited
^ **ACCESS TO SOCIAL PENSION**

Especially for poor individuals without history of waged employment

Perpetuated by their children or other relatives



limited

^ ACCESS TO JUSTICE

Due to difficulty in accessing legal services coupled with the victims' weak help-seeking behavior



Key Issues and Challenges of WOMEN FACING EXPLOITATION, ABUSE, AND/OR VIOLENCE

in the Philippines

SOCIAL DISCRIMINATION

Stigma against HIV-positive women and those previously and currently engaged in prostitution

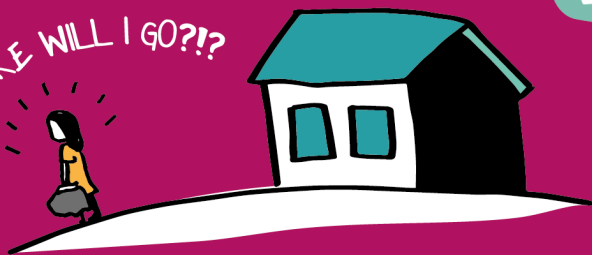


limited

^ ACCESS TO SERVICES FOR VAW SURVIVORS

Services including shelters and one-stop shop for rescued women

WHERE WILL I GO???



VULNERABILITY

Exposure to re-victimization



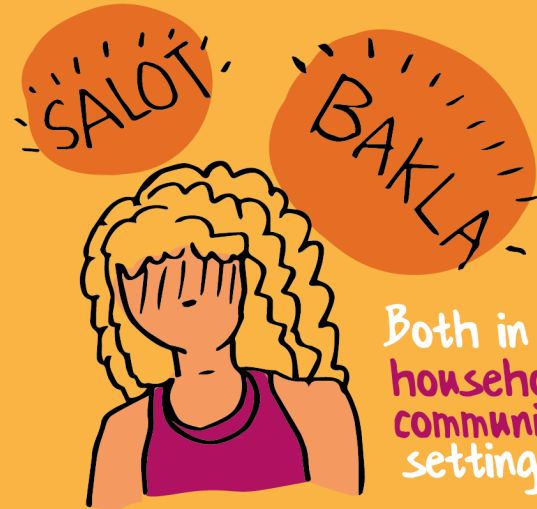
LACK OF OPPORTUNITIES

Lack of options in terms of productive activities, especially for teenage mothers



SOCIAL DISCRIMINATION

Stigma manifested through hate speech and violence



Both in household & community settings

DISCRIMINATION IN EMPLOYMENT

Limited options and stereotyped to jobs in beauty and entertainment industries, even prostitution



Key Issues and Challenges of

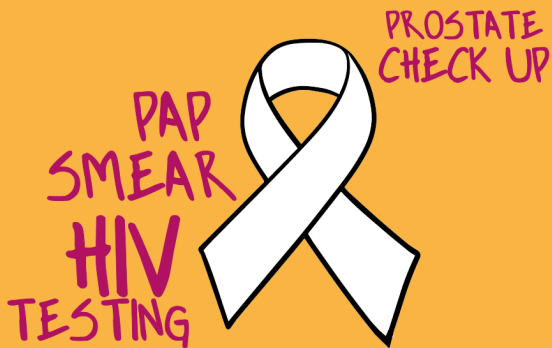
LGBT

in the Philippines

limited

ACCESS TO HEALTH SERVICES

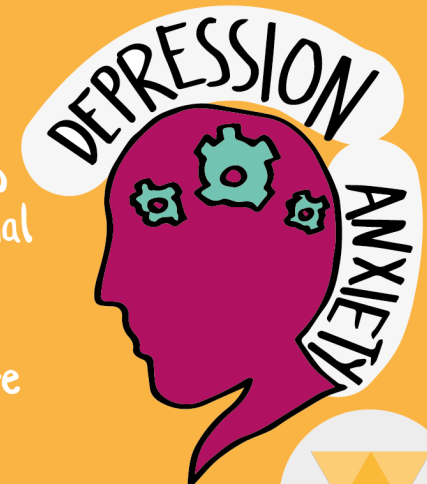
Because of insensitive and derogatory health personnel



limited

ACCESS TO MENTAL HEALTH SERVICES

Lack of access to psychosocial support and healthcare



UNDER REPRESENTED

Lack of representation or participation in political activities



INACCESSIBLE ENVIRONMENT



Limiting access to basic services



limited ^ ACCESS TO EDUCATION

Very limited access to education and opportunities for personal development



DISCRIMINATION IN EMPLOYMENT

Due to stereotypes on disability & productivity



SOCIAL DISCRIMINATION

Stigma manifested through ridicule and violence in both household and community settings



UNDER REPRESENTED

Lack of representation or participation in political activities



GEOGRAPHICALLY REMOTE LOCATION

Limiting the access to basic social services, health and education



LAND STRUGGLE

Continued struggle on their claims to

ancestral domain



Key Issues and Challenges of INDIGENOUS PEOPLES in the Philippines

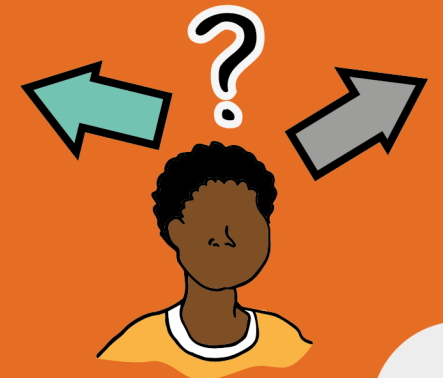
DISPLACEMENT

Due to activities of extractive industries and similar activities



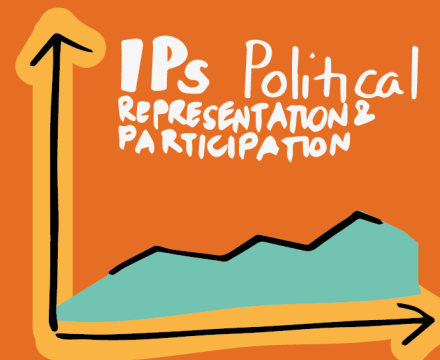
LACK OF LIVELIHOOD OPPORTUNITIES

Lack of options in terms of productive activities



UNDER REPRESENTED

Lack of representation or participation in political activities



SOCIALLY EXCLUDED GROUPS IN THE PHILIPPINES

CROSS-SECTORAL ISSUES

